

# SEASHHELL SHELLS BYRON

Seashell

Ras El Hekma

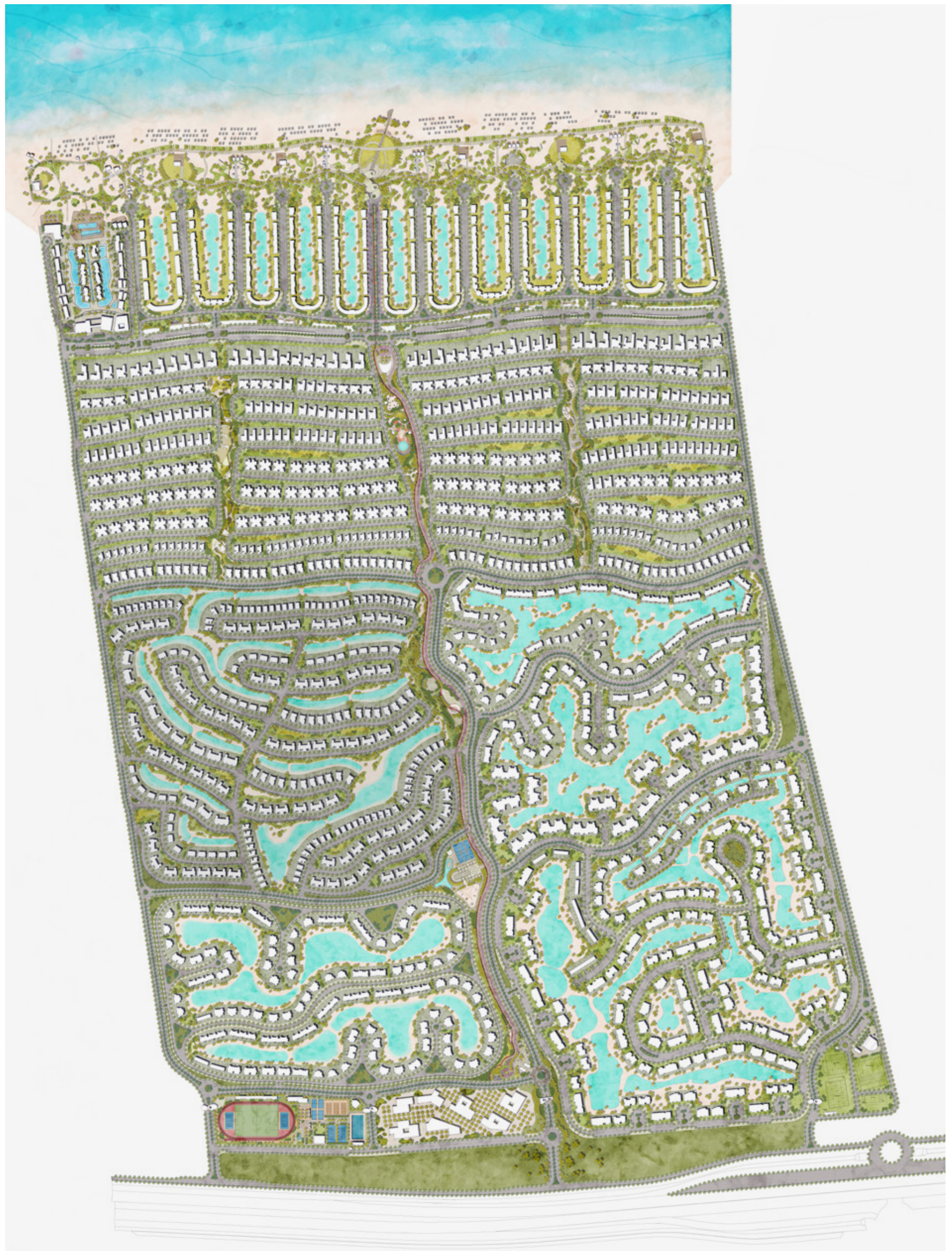
Chalets

**Ideally located in the picturesque setting of Ras El Hekma, Seashell merges natural beauty and modern-day convenience, promising a worry-free summer to remember.**

The destination invites residents to tap into the idyllic beauty of Ras El Hekma's pristine beaches, crystal-clear waters, and breathtaking sunsets while enjoying easy access to all major highways, as well as the North Coast's urban centers and lively happenings.

**Proximity and Location.**

# masterplan.





# SEASHELL WATER-FRONT MASTERPLAN.

# HORIZON CHALETS

---



Disclaimer  
All materials, dimensions and drawings are approximate. Information is subject to change without notice. Drawings are not to scale and actual usable floor space may vary from the state floor plans. The developer reserves the right to make revisions to the floor plans.



Disclaimer:  
All materials, dimensions and drawings are approximate. Information is subject to change without notice. Drawings are not to scale and actual usable floor space may vary from the state floor plans. The developer reserves the right to make revisions to the floor plans.



Disclaimer  
All materials, dimensions and drawings are approximate. Information is subject to change without notice. Drawings are not to scale and actual usable floor space may vary from the state floor plans. The developer reserves the right to make revisions to the floor plans.



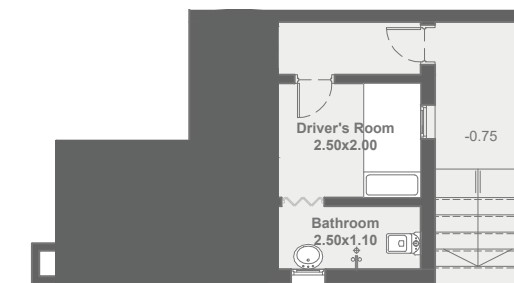
Disclaimer  
All materials, dimensions and drawings are approximate. Information is subject to change without notice. Drawings are not to scale and actual usable floor space may vary from the state floor plans. The developer reserves the right to make revisions to the floor plans.

# Horizon Lower Chalet

3-Bedroom

BUA

176 m<sup>2</sup>



Basement



Ground Floor

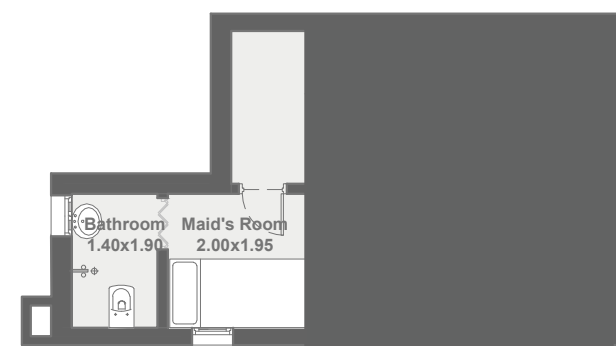
Disclaimer  
All materials, dimensions and drawings are approximate. Information is subject to change without notice. Drawings are not to scale and actual usable floor space may vary from the state floor plans. The developer reserves the right to make revisions to the floor plans.

# Horizon Upper Chalet

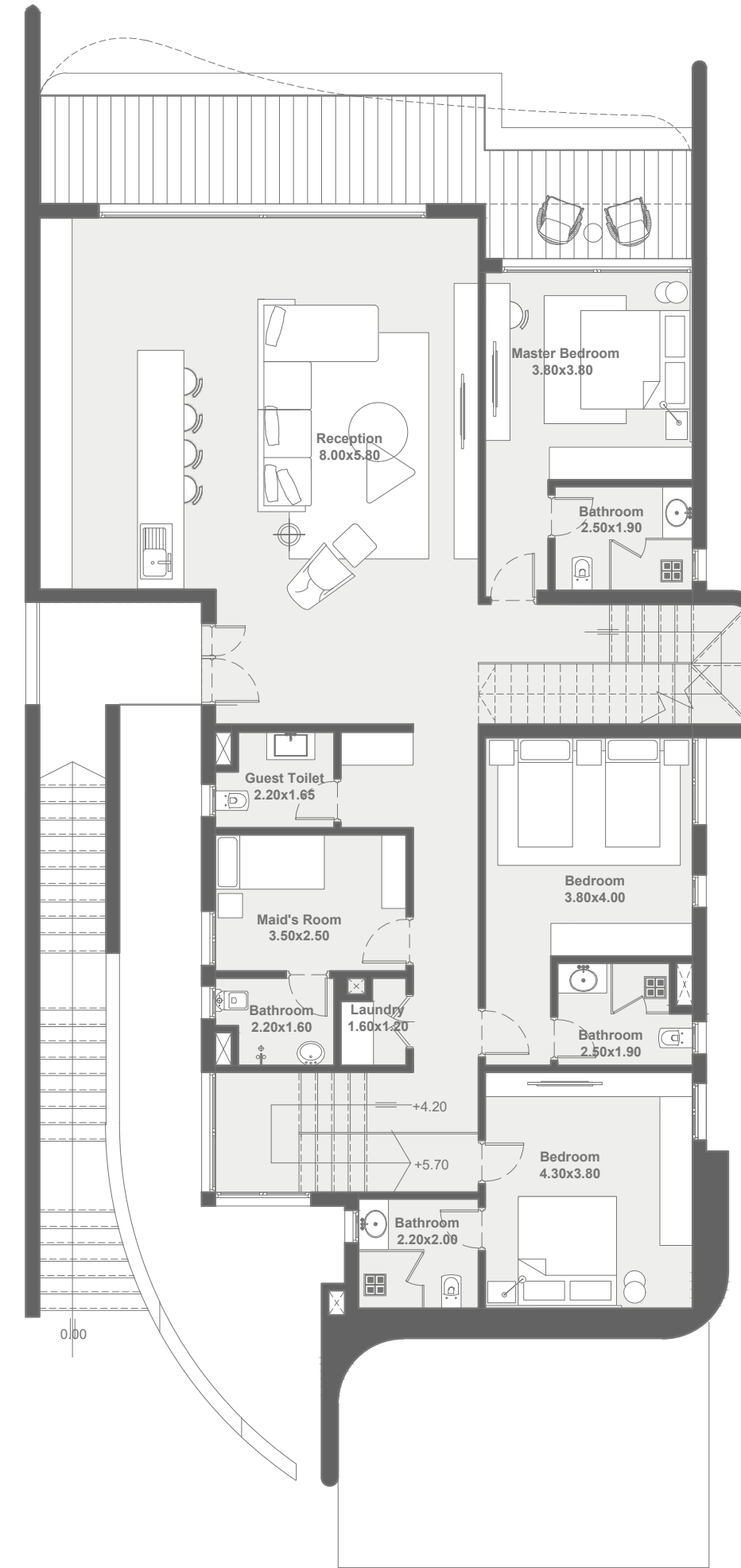
4-Bedroom

BUA

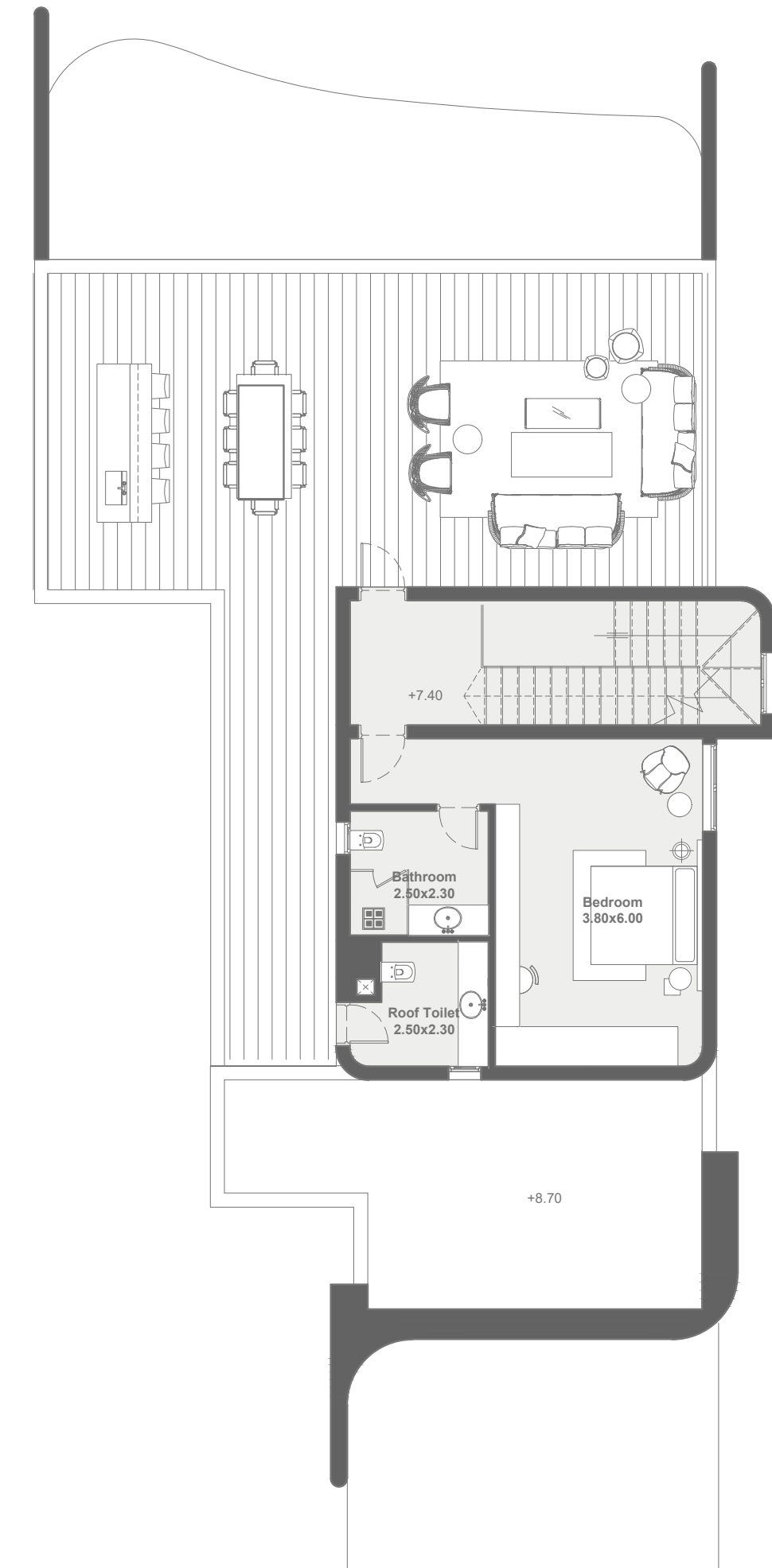
268 m<sup>2</sup>



Basement



First Floor



Roof

Disclaimer  
All materials, dimensions and drawings are approximate. Information is subject to change without notice. Drawings are not to scale and actual usable floor space may vary from the state floor plans. The developer reserves the right to make revisions to the floor plans.

# BEACH HOUSE CHALETS

4-Bedroom

---



Disclaimer  
All materials, dimensions and drawings are approximate. Information is subject to change without notice. Drawings are not to scale and actual usable floor space may vary from the state floor plans. The developer reserves the right to make revisions to the floor plans.



Disclaimer: This is a conceptual rendering of the property. The actual property may vary from the rendering. The developer reserves the right to make revisions to the floor plans.



Disclaimer  
All materials, dimensions and drawings are approximate. Information is subject to change without notice. Drawings are not to scale and actual usable floor space may vary from the state floor plans. The developer reserves the right to make revisions to the floor plans.



Seashell  
Grand Beach House 04

Disclaimer  
All materials, dimensions and drawings are approximate. Information is subject to change without notice. Drawings are not to scale and actual usable floor space may vary from the state floor plans. The developer reserves the right to make revisions to the floor plans.

# Grand Beach House 4

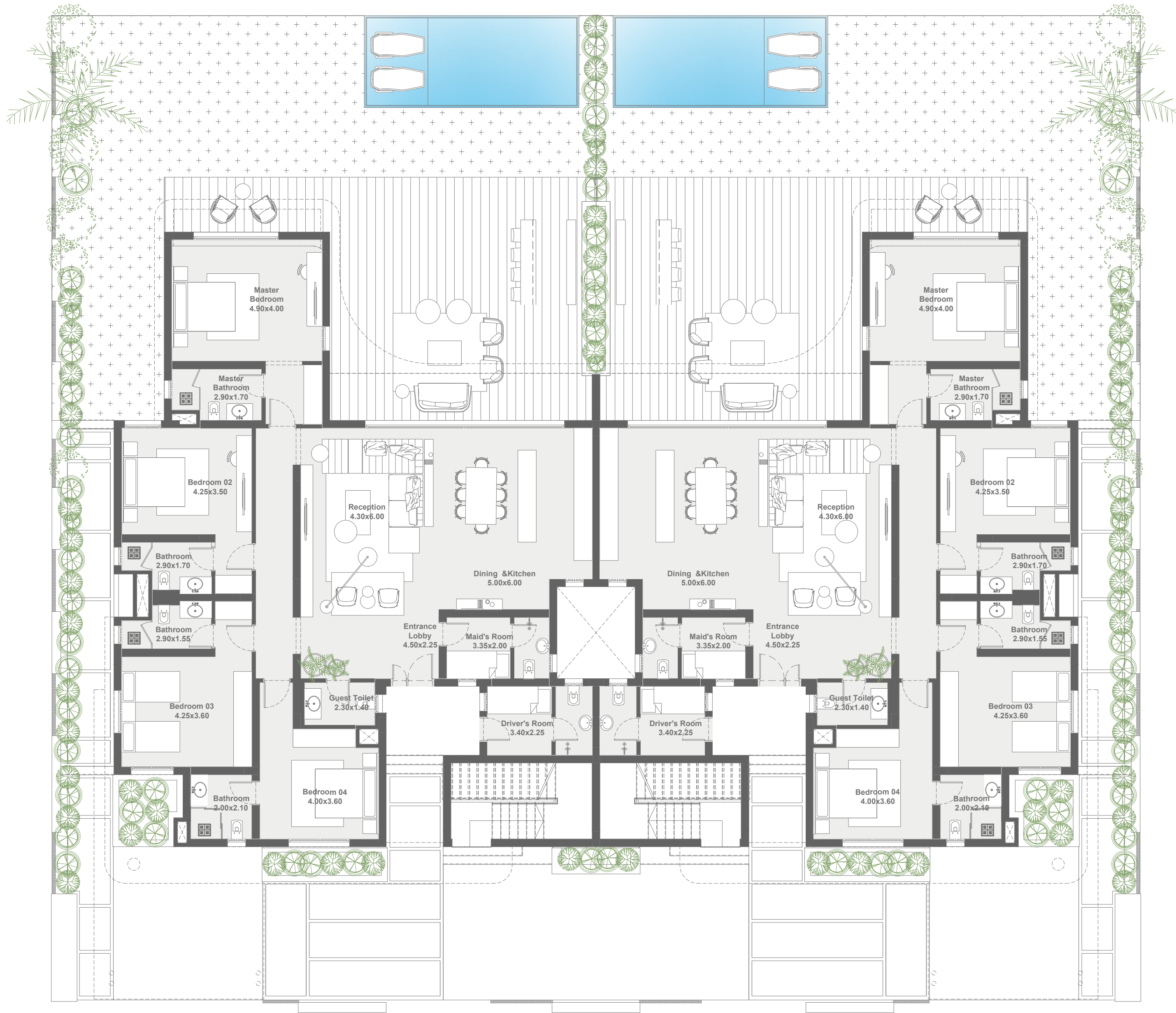
4-Bedroom

Ground Level Chalet

Net Area

217 m<sup>2</sup>

Disclaimer: Terraces are not included



Ground Floor

Disclaimer  
All materials, dimensions and drawings are approximate. Information is subject to change without notice. Drawings are not to scale and actual usable floor space may vary from the state floor plans. The developer reserves the right to make revisions to the floor plans.

# Grand Beach House 4

4-  
Bedroom

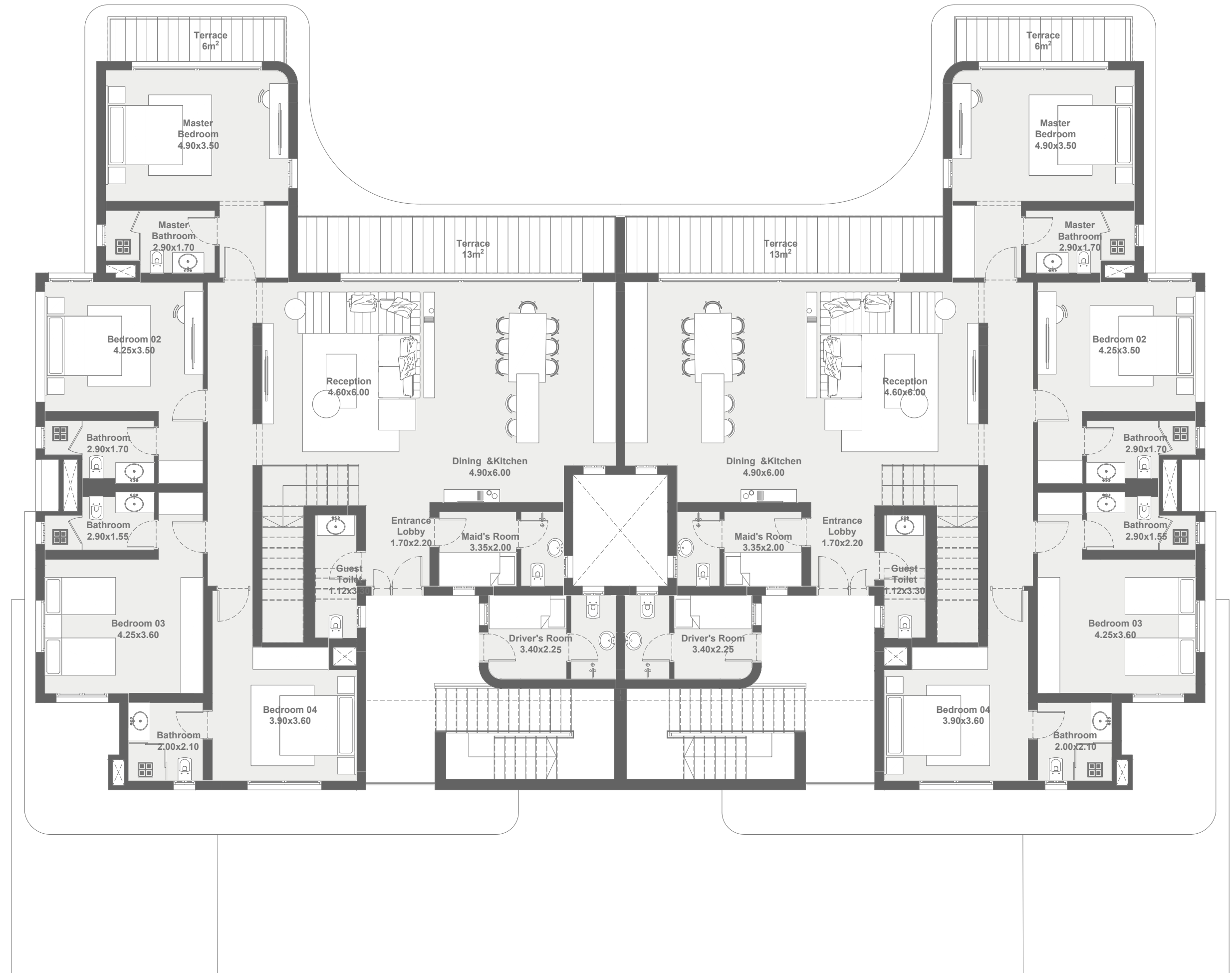
First Level Chalet  
with Roof Access Only

**Net Area** 234 m<sup>2</sup>

**Terraces** 23 m<sup>2</sup>

**Roof Terrace** 179 m<sup>2</sup>

Disclaimer: Terraces are not included



**First Floor**

Disclaimer  
All materials, dimensions and drawings are approximate. Information is subject to change without notice. Drawings are not to scale and actual usable floor space may vary from the state floor plans. The developer reserves the right to make revisions to the floor plans.

# Grand Beach House 4

4-  
Bedroom

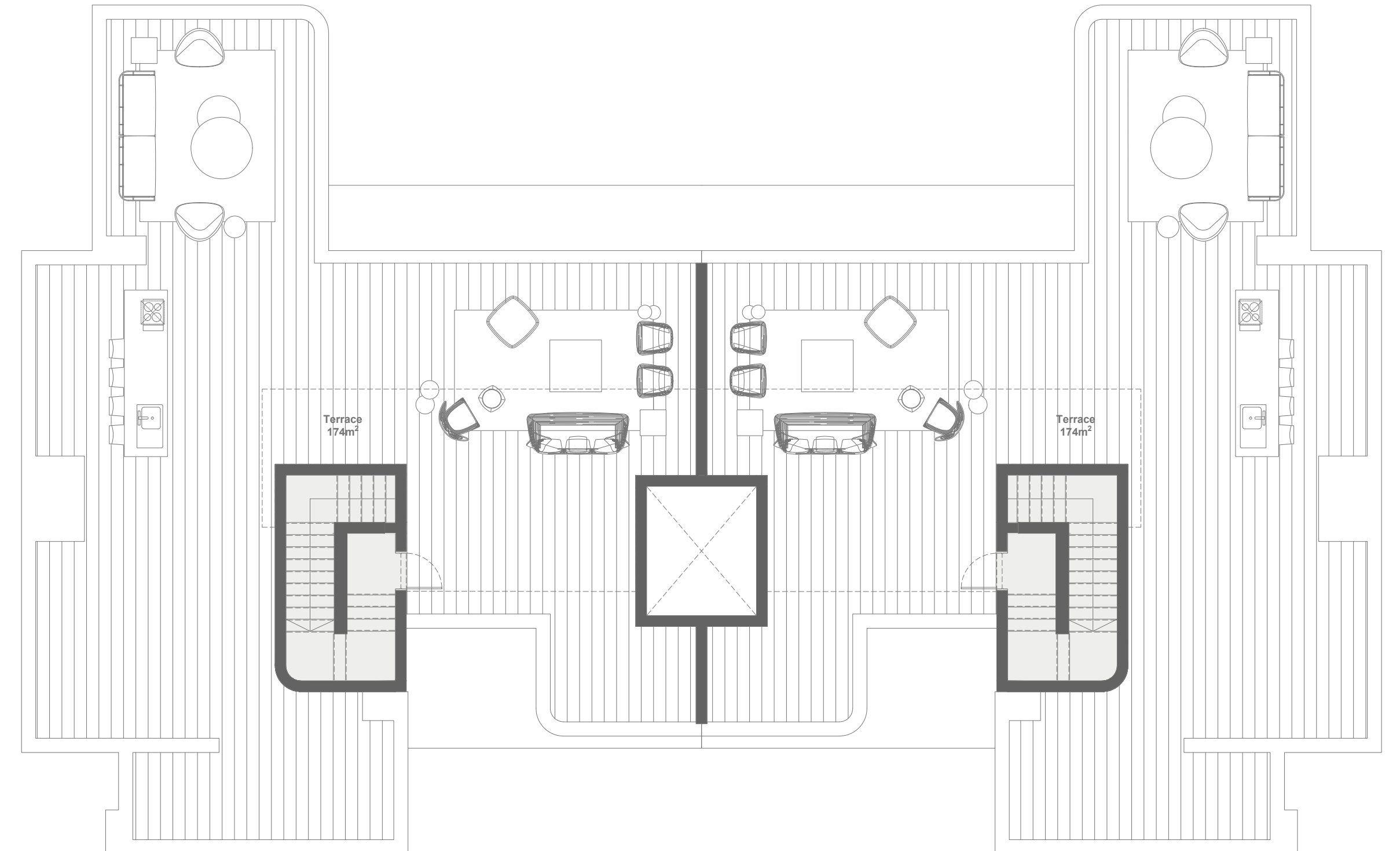
First Level Chalet  
with Roof Access Only

**Net Area** 234 m<sup>2</sup>

**Terraces** 23 m<sup>2</sup>

**Roof Terrace** 179 m<sup>2</sup>

–  
Disclaimer: Terraces are not included



**Roof**

Disclaimer  
All materials, dimensions and drawings are approximate. Information is subject to change without notice. Drawings are not to scale and actual usable floor space may vary from the state floor plans. The developer reserves the right to make revisions to the floor plans.

# BEACH HOUSE CHALETS

3-Bedroom

---



Disclaimer  
All materials, dimensions and drawings are approximate. Information is subject to change without notice. Drawings are not to scale and actual usable floor space may vary from the state floor plans. The developer reserves the right to make revisions to the floor plans.



Disclaimer  
All materials, dimensions and drawings are approximate. Information is subject to change without notice. Drawings are not to scale and actual usable floor space may vary from the state floor plans. The developer reserves the right to make revisions to the floor plans.



Seashell  
Grand Beach House

Disclaimer  
All materials, dimensions and drawings are approximate. Information is subject to change without notice. Drawings are not to scale and actual usable floor space may vary from the state floor plans. The developer reserves the right to make revisions to the floor plans.

# Grand Beach House 3

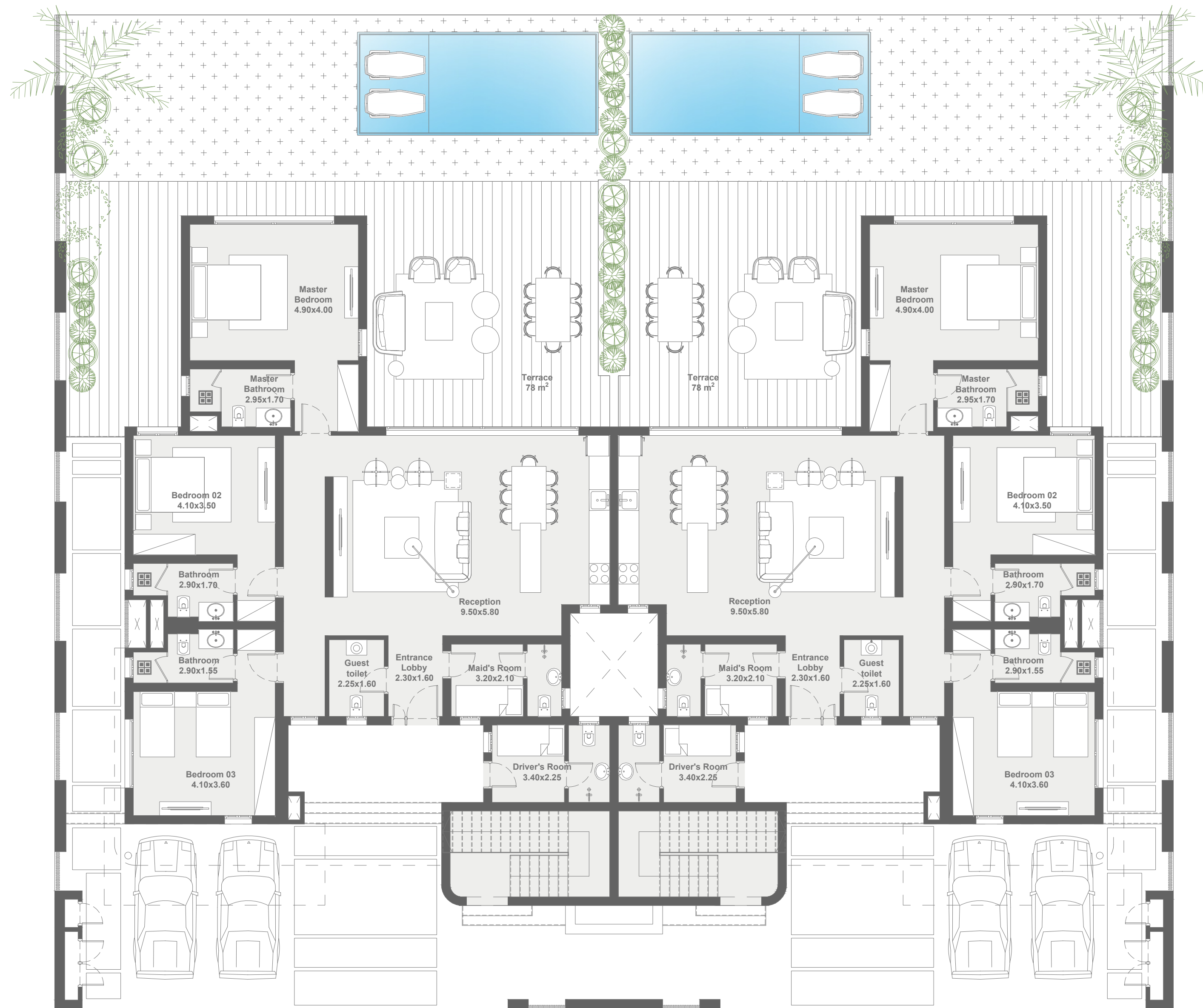
3-  
Bedroom

Ground Level Chalet

Net Area

176 m<sup>2</sup>

Disclaimer: Terraces are not included



Ground Floor

Disclaimer  
All materials, dimensions and drawings are approximate. Information is subject to change without notice. Drawings are not to scale and actual usable floor space may vary from the state floor plans. The developer reserves the right to make revisions to the floor plans.

# Grand Beach House 3

4-  
Bedroom

Upper Level Chalet  
with Roof & Room

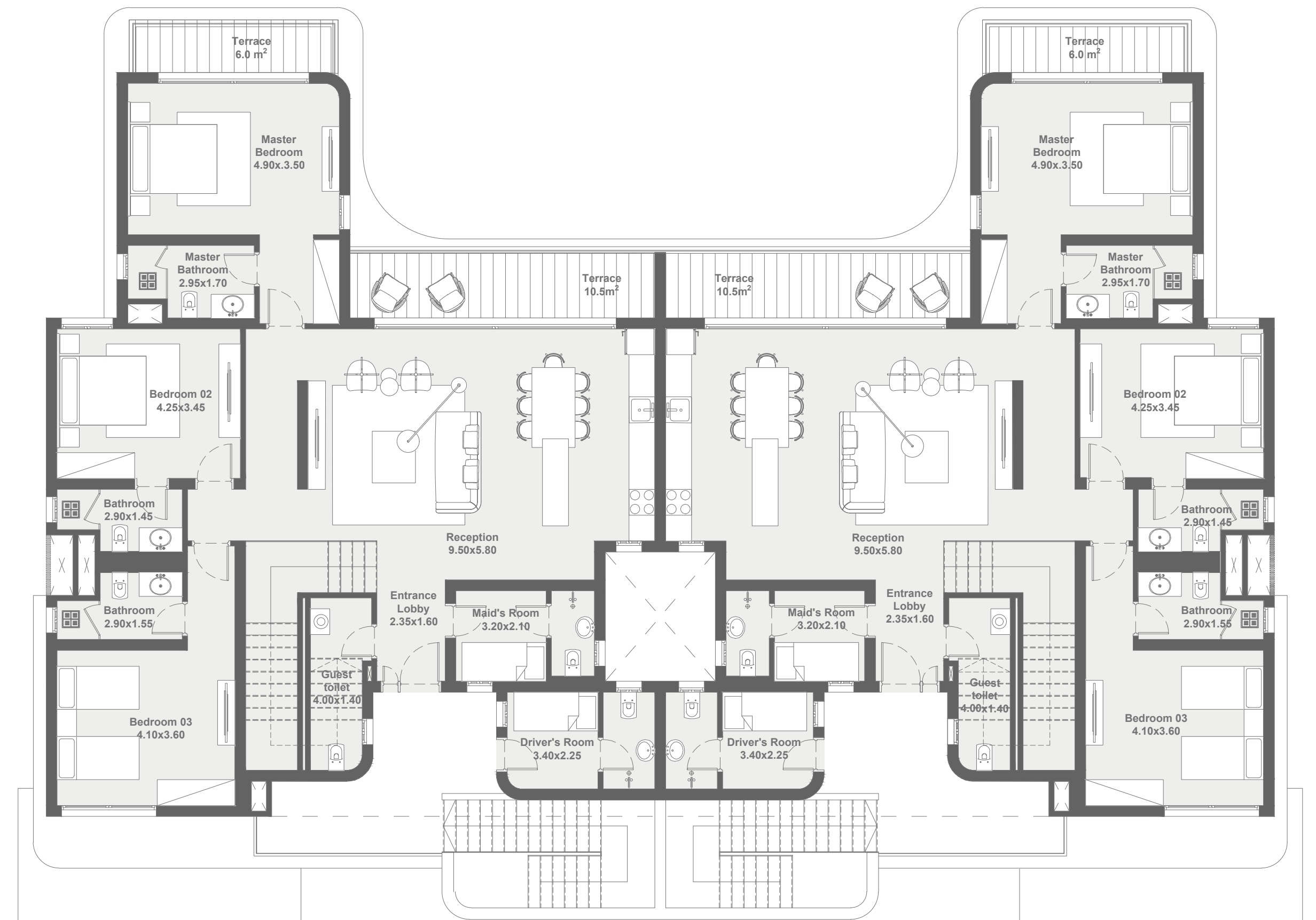
**Net Area (Left)** 242 m<sup>2</sup>

**Net Area (Right)** 238 m<sup>2</sup>

**Terraces**

102 m<sup>2</sup>

–  
Disclaimer: Terraces are not included



**First Floor**

Disclaimer  
All materials, dimensions and drawings are approximate. Information is subject to change without notice. Drawings are not to scale and actual usable floor space may vary from the state floor plans. The developer reserves the right to make revisions to the floor plans.

# Grand Beach House 3

4-  
Bedroom

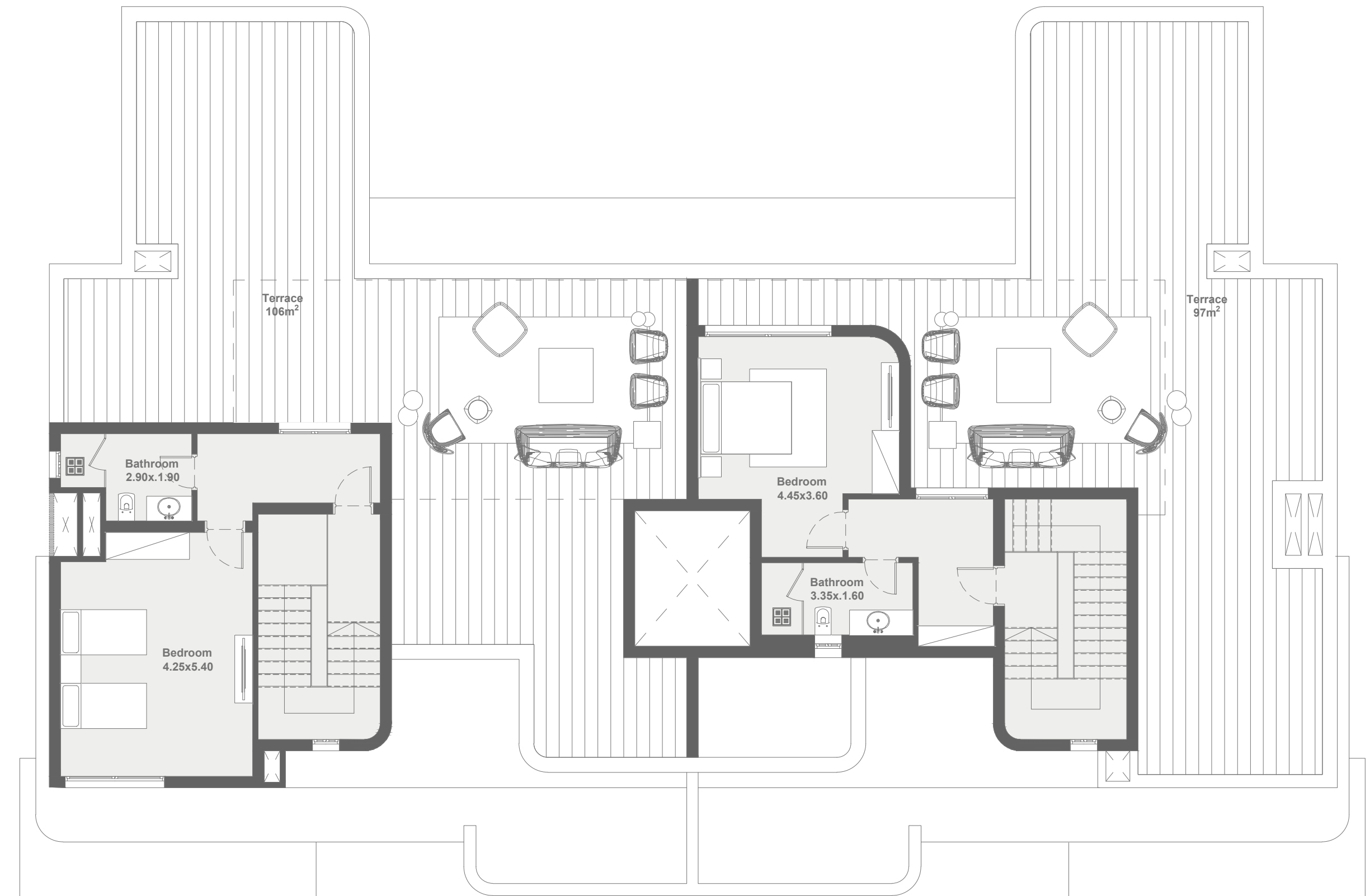
Upper Level Chalet  
with Roof & Room

Net Area (Left) 242 m<sup>2</sup>

Terraces 102 m<sup>2</sup>

Net Area (Right) 238 m<sup>2</sup>

–  
Disclaimer: Terraces are not included



Roof

**G Developments**