

SEASHHELL BURROTT STEWART

Seashell

Ras El Hekma

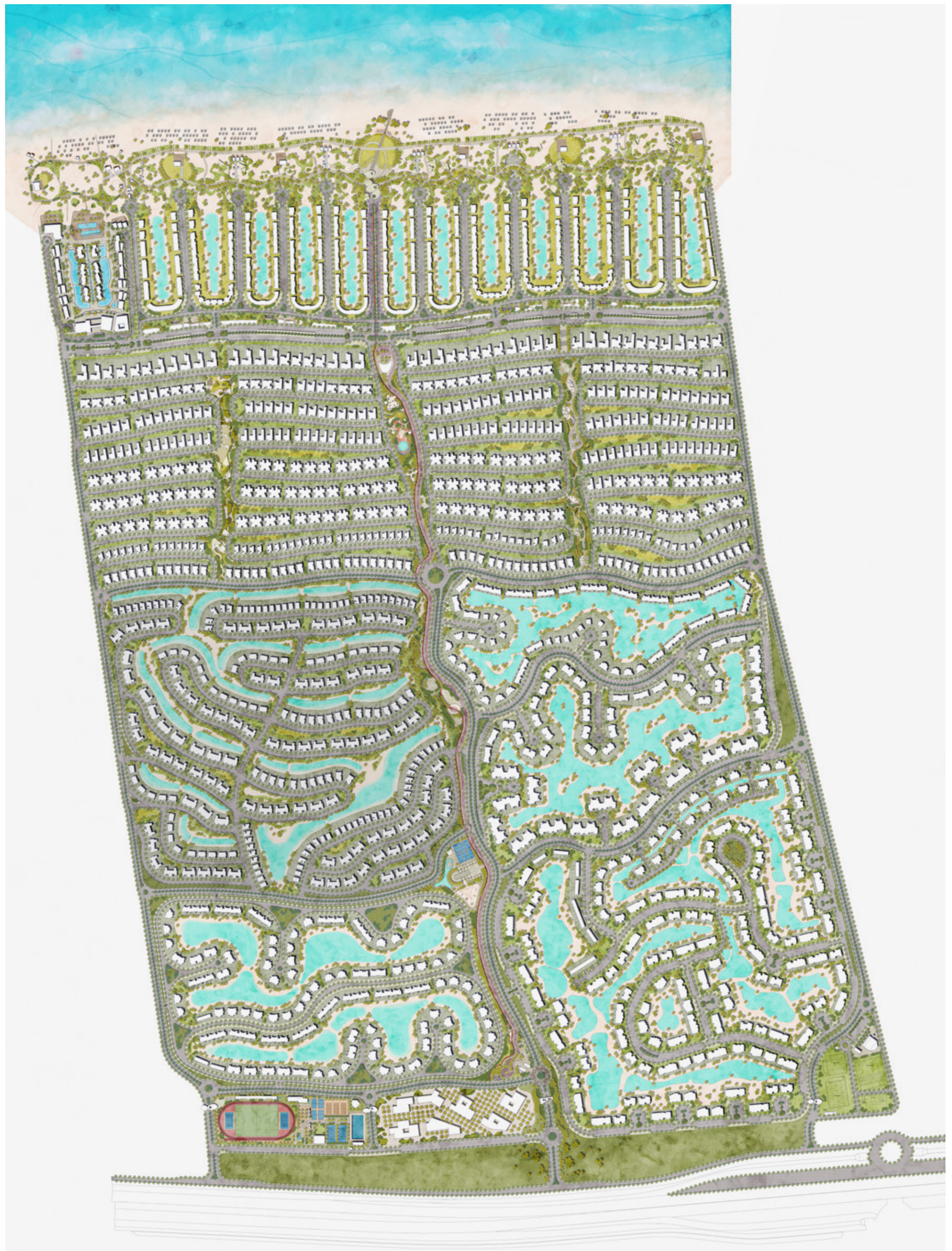
Beach Villas

Ideally located in the picturesque setting of Ras El Hekma, Seashell merges natural beauty and modern-day convenience, promising a worry-free summer to remember.

The destination invites residents to tap into the idyllic beauty of Ras El Hekma's pristine beaches, crystal-clear waters, and breathtaking sunsets while enjoying easy access to all major highways, as well as the North Coast's urban centers and lively happenings.

Proximity and Location.

masterplan.





SEASHELL WATER-FRONT MASTERPLAN.

GRAND VILLA



Disclaimer
All materials, dimensions and drawings are approximate. Information is subject to change without notice. Drawings are not to scale and actual usable floor space may vary from the state floor plans. The developer reserves the right to make revisions to the floor plans.



Disclaimer
All materials, dimensions and drawings are approximate. Information is subject to change without notice. Drawings are not to scale and actual usable floor space may vary from the state floor plans. The developer reserves the right to make revisions to the floor plans.



Seashell
Grand Villa 01

Disclaimer
All materials, dimensions and drawings are approximate. Information is subject to change without notice. Drawings are not to scale and actual usable floor space may vary from the state floor plans. The developer reserves the right to make revisions to the floor plans.



Seashell
Grand Villa 01

Disclaimer
All materials, dimensions and drawings are approximate. Information is subject to change without notice. Drawings are not to scale and actual usable floor space may vary from the state floor plans. The developer reserves the right to make revisions to the floor plans.

Grand Villa

5-
Bedroom

Net Area 304 m²

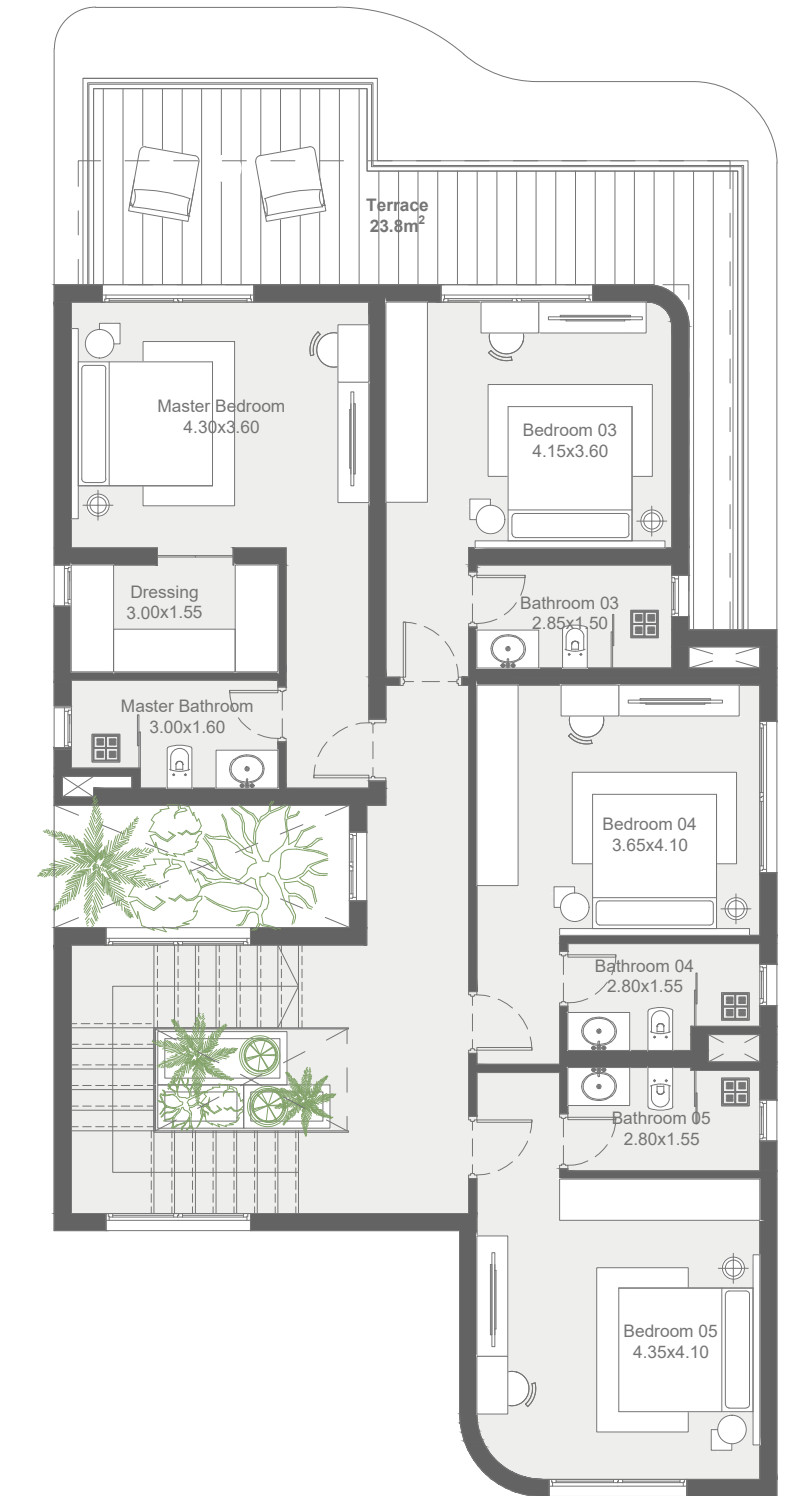
Terraces 32 m²

Total Area 336 m²

Disclaimer: Terraces are not included



Ground Floor



First Floor

Disclaimer
All materials, dimensions and drawings are approximate. Information is subject to change without notice. Drawings are not to scale and actual usable floor space may vary from the state floor plans. The developer reserves the right to make revisions to the floor plans.

DELUXE VILLA



Disclaimer
All materials, dimensions and drawings are approximate. Information is subject to change without notice. Drawings are not to scale and actual usable floor space may vary from the state floor plans. The developer reserves the right to make revisions to the floor plans.



Seashell
Deluxe Villa 01

Disclaimer
All materials, dimensions and drawings are approximate. Information is subject to change without notice. Drawings are not to scale and actual usable floor space may vary from the state floor plans. The developer reserves the right to make revisions to the floor plans.

Deluxe Villa

4-
Bedroom

Net Area 264 m²

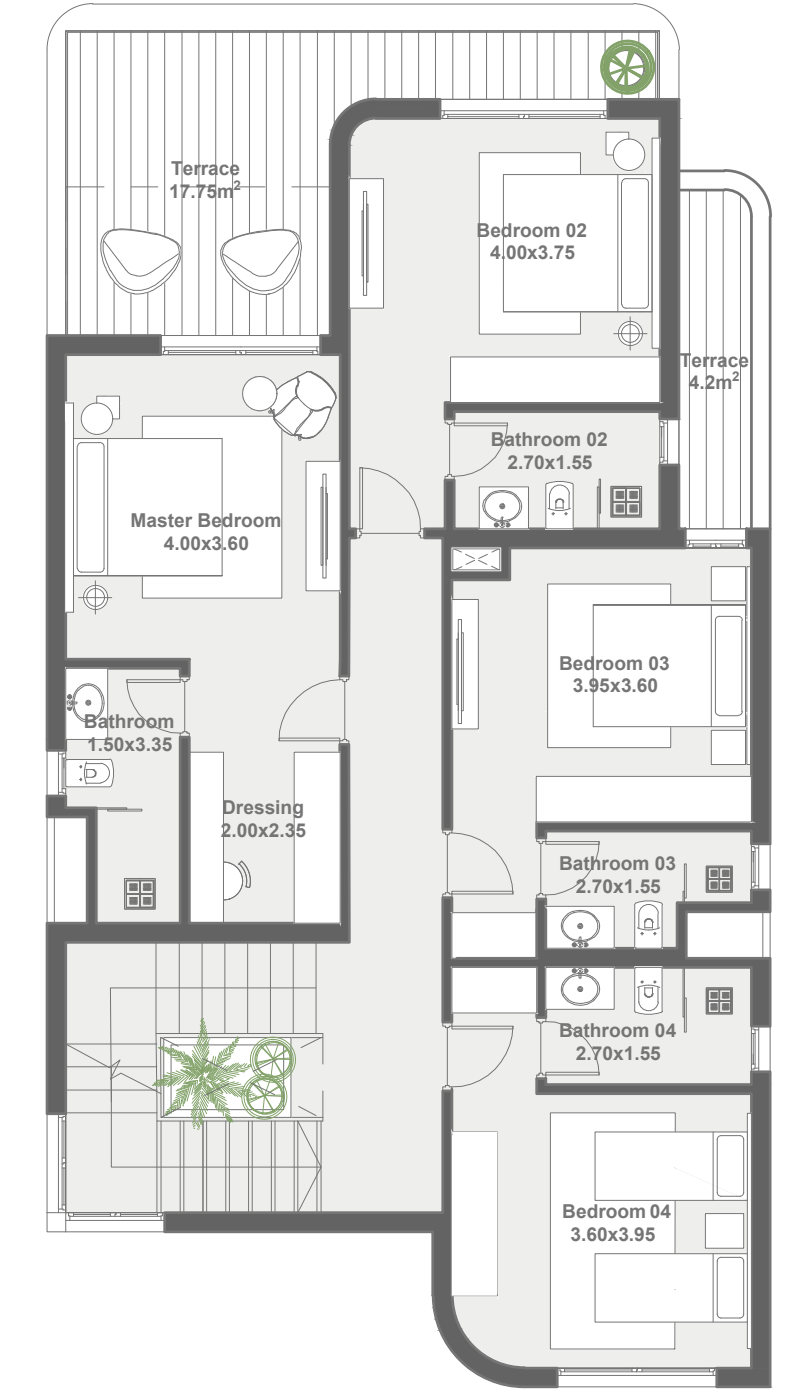
Total Area 278 m²

Terraces 14 m²

–
Disclaimer: Terraces are not included



Ground Floor



First Floor

Disclaimer
All materials, dimensions and drawings are approximate. Information is subject to change without notice. Drawings are not to scale and actual usable floor space may vary from the state floor plans. The developer reserves the right to make revisions to the floor plans.

GRAND TWINHOUSE VILLAS



Disclaimer
All materials, dimensions and drawings are approximate. Information is subject to change without notice. Drawings are not to scale and actual usable floor space may vary from the state floor plans. The developer reserves the right to make revisions to the floor plans.



Disclaimer
All materials, dimensions and drawings are approximate. Information is subject to change without notice. Drawings are not to scale and actual usable floor space may vary from the state floor plans. The developer reserves the right to make revisions to the floor plans.



Disclaimer
All materials, dimensions and drawings are approximate. Information is subject to change without notice. Drawings are not to scale and actual usable floor space may vary from the state floor plans. The developer reserves the right to make revisions to the floor plans.



Seashell
Twinhouse
01

Seashell
Twinhouse
02

Disclaimer
All materials, dimensions and drawings are approximate. Information is subject to change without notice. Drawings are not to scale and actual usable floor space may vary from the state floor plans. The developer reserves the right to make revisions to the floor plans.



Seashell
Twinhouse
01

Seashell
Twinhouse
02

Disclaimer
All materials, dimensions and drawings are approximate. Information is subject to change without notice. Drawings are not to scale and actual usable floor space may vary from the state floor plans. The developer reserves the right to make revisions to the floor plans.

Grand Twinhouse Villa

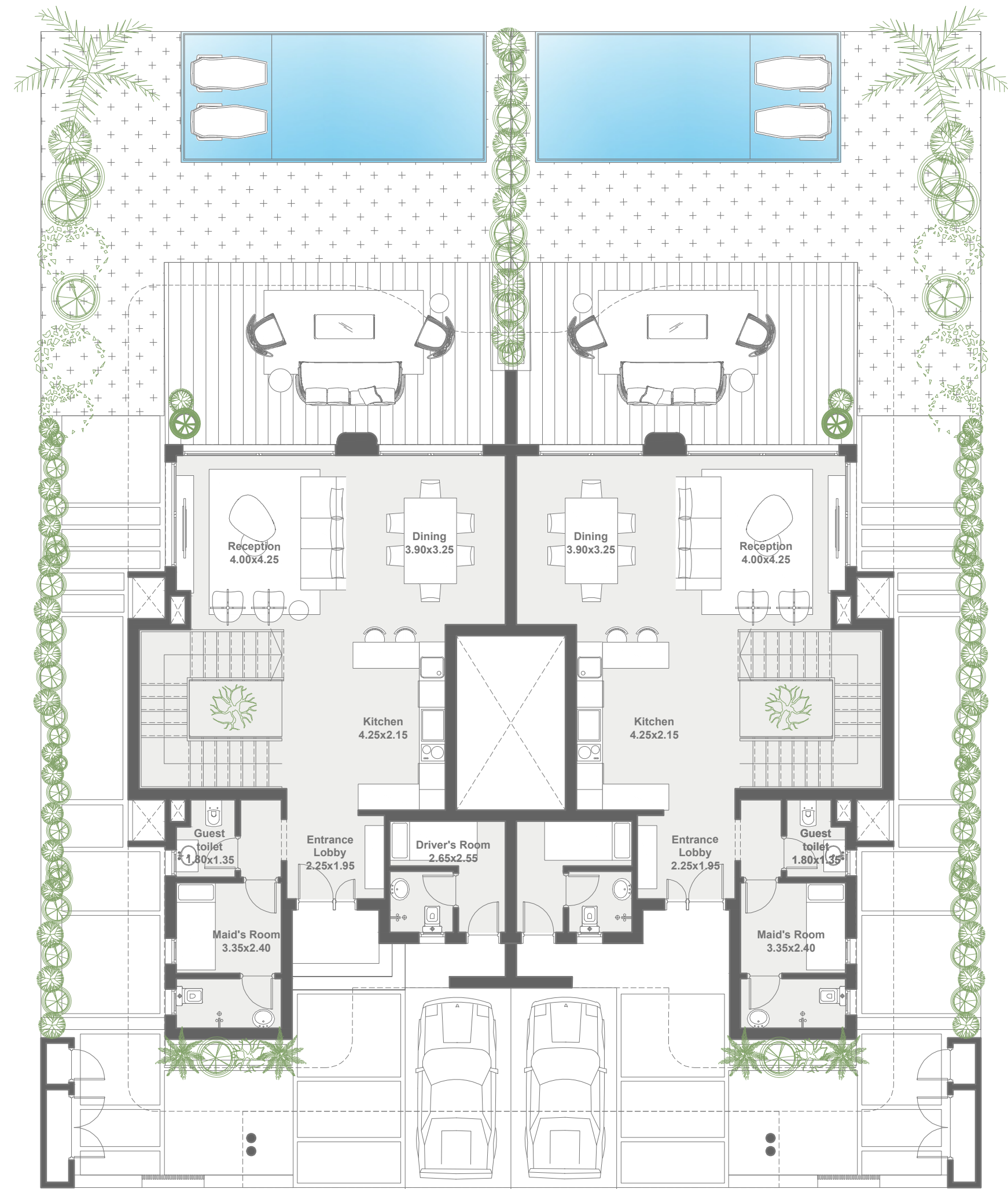
4-
Bedroom

Ground Floor

Net Area

208 m²

Disclaimer: Terraces are not included



Ground Floor

Disclaimer
All materials, dimensions and drawings are approximate. Information is subject to change without notice. Drawings are not to scale and actual usable floor space may vary from the state floor plans. The developer reserves the right to make revisions to the floor plans.

Grand Twinhouse Villa

4-
Bedroom

First Floor

Net Area

208 m²

Disclaimer: Terraces are not included



First Floor

Disclaimer
All materials, dimensions and drawings are approximate. Information is subject to change without notice. Drawings are not to scale and actual usable floor space may vary from the state floor plans. The developer reserves the right to make revisions to the floor plans.

G Developments